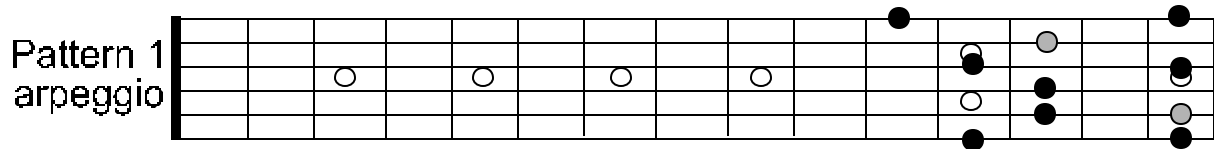
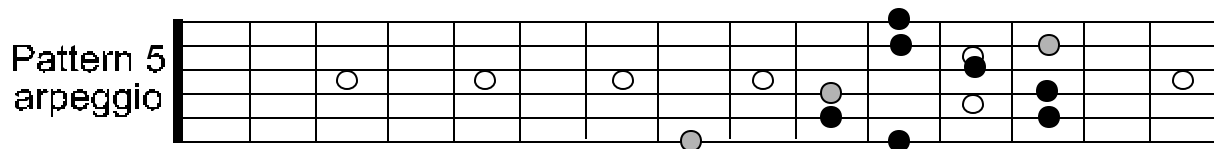
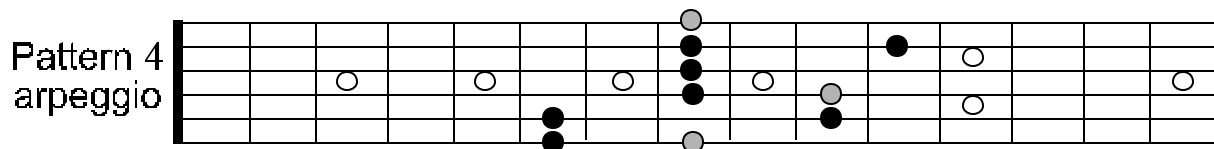
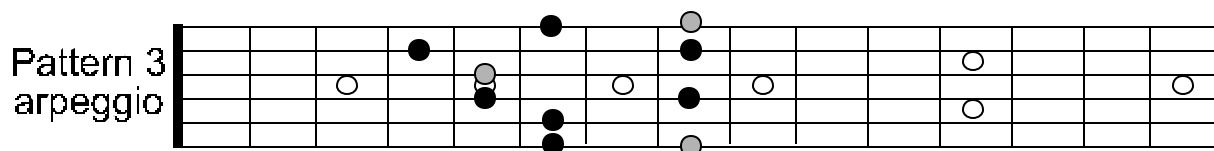
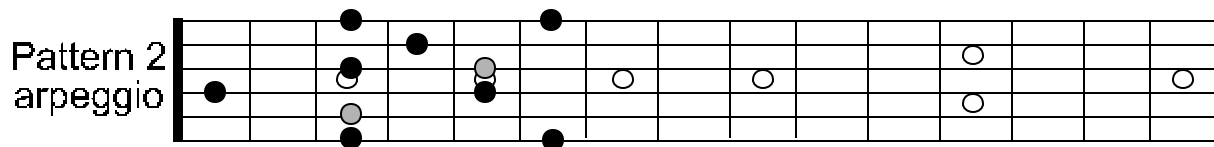


C Min7 ARPEGGIO PATTERNS

Root notes are signified by a lighter color.



TIP: THE C MIN7 ARPEGGIO IS SIMILAR TO THAT OF THE DOM7 ARPEGGIO. THE ONLY DIFFERENCE IS THE $b3$ INSTEAD OF THE NATURAL 3. IT IS THIS NOTE ALONE THAT DETERMINES THIS ARPEGGIO FORM AS MINOR. NOTICE WHEN YOU PLAY IT WHICH NOTE IS DIFFERENT, SO THAT YOU MAY EMPHASIZE IT WHEN SOLOING.