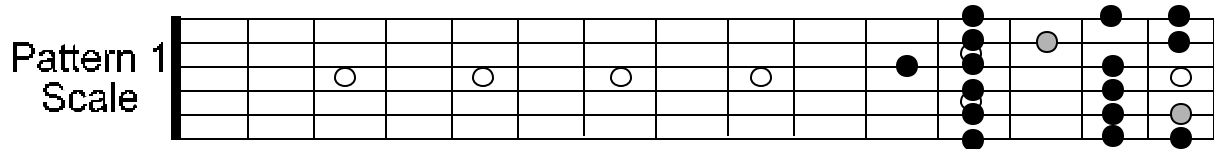
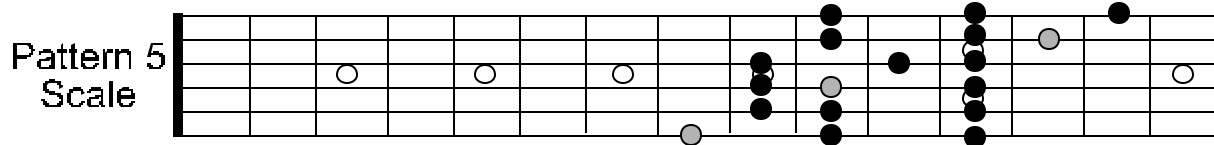
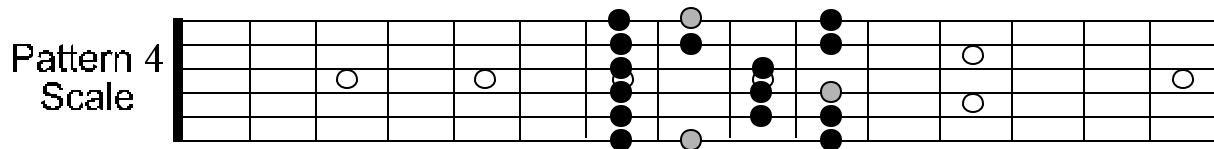
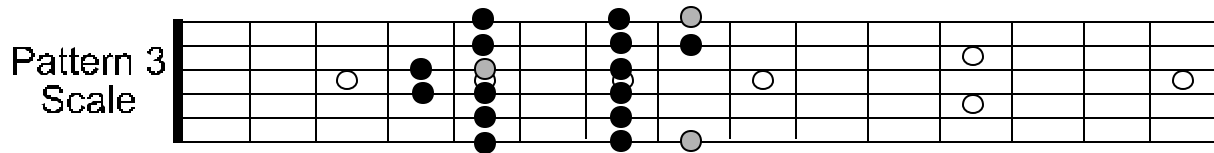
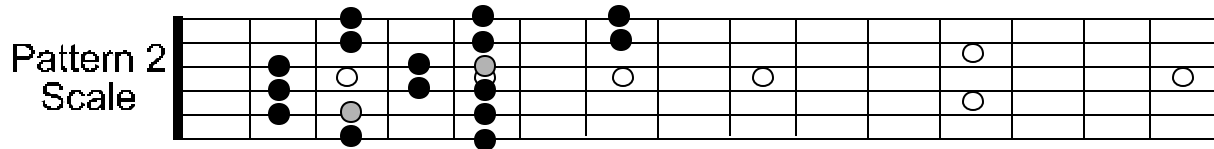


C LYDIAN PATTERNS

Root notes are signified by a lighter color.



NOTE: BY SHARPING THE 4TH NOTE OF THE MAJOR SCALE BY A HALF STEP, YOU HAVE CREATED THE LYDIAN MODE.

THE LYDIAN MODE IS A NON-TRADITIONAL MAJOR-BASED SOUND THAT WORKS WELL OVER A MAJOR 7 CHORD & MAJOR b5 CHORD AS WELL AS A MAJOR CHORD THAT SHARES THE SAME ROOT NOTE.