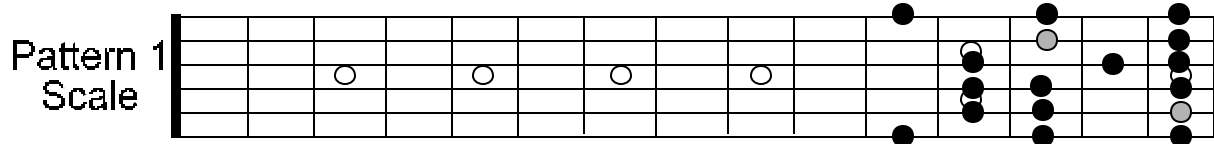
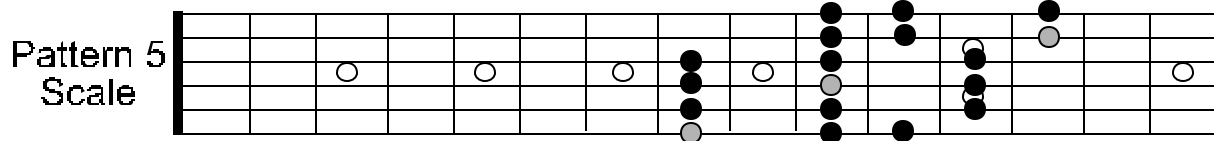
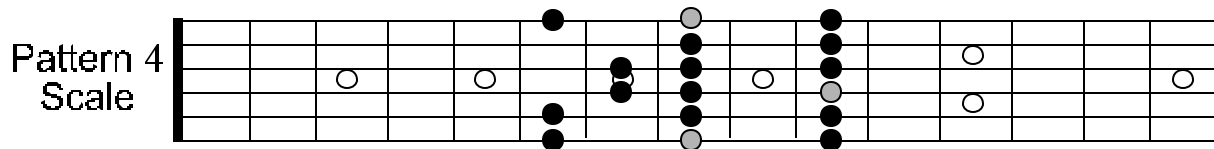
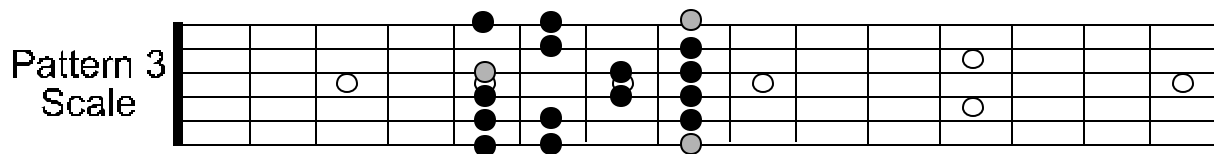
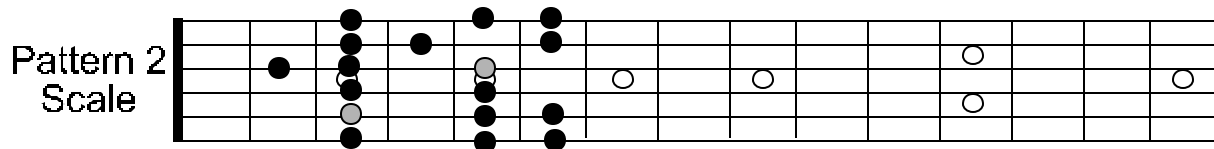


C DORIAN PATTERNS

Root notes are signified by a lighter color.



NOTE: BY FLATTING THE 3RD AND 7TH NOTE OF THE MAJOR SCALE BY A HALF STEP, YOU HAVE CREATED THE DORIAN MODE.

THE DORIAN MODE IS A BLUESY MINOR-BASED SCALE THAT WORKS WELL OVER A MINOR 7, DOMINANT 9 OR 13 OR A MINOR CHORD THAT SHARES THE SAME ROOT NOTE.